

Instruction Sheet

Follow these instructions to install the larger power supply.

1. Remove the JIB/BIB to access the FIB box (see Figure 1).
2. Remove the FIB box cover by removing the two (2) ¼" screws attaching the cover and lifting up on the cover to remove (see Figure 2).
3. Remove the fuse from the top or side of the FIB box to disconnect power from the power supply (see Figure 3).
4. Disconnect the green ground wire from the power supply (see Figure 4).
5. Using a small screwdriver, gently push away the lock from the connector and disconnect the power harness, with the black and white wires, from the power supply (see Figure 5).
6. Using a small screwdriver gently push away the lock from the connector and disconnect the harness, with the two (2) purple and two (2) brown wires, from the power supply (see Figure 6).
7. Use needle nose pliers to squeeze the power supply standoff mounts to allow removal of the power supply (see Figure 7).
8. Remove the wires from the wire clip and remove the wire clip from the bottom of the FIB box if applicable (see Figure 8).



Figure 1

In This Kit		
Part #	Description	Qty
2402075	PLATE, ADAPTER POWER SUPPLY	1
8076490	POWER SUPPLY	1
8090580	STANDOFF, UHC PCB X.312 LG	8
W1C666	BROWN WIRE	1
W2C654	PURPLE WIRE	1
8074056	CONNECTOR 3 WIRE SNAP (WAGO)	2
8198001	INSTRUCTIONS	1



Figure 2



Figure 3



Figure 4



Figure 5



Figure 6



Figure 7



Figure 8

9. Using pliers squeeze four (4) of the standoff mounts and insert them through the bottom of the power supply (see Figures 9 and 10).



Figure 9

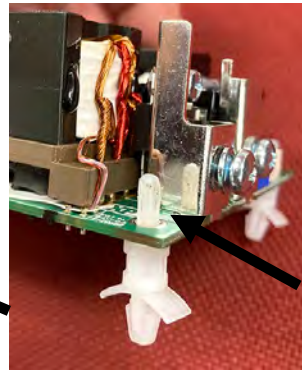


Figure 10

10. Locate the mounting plate and orient the plate with the double holes in the far top right corner (see Figure 11).



Figure 11

11. Starting with the hole in the far top right corner, insert the standoff mounts through the bottom of the plate as shown (see Figure 12).

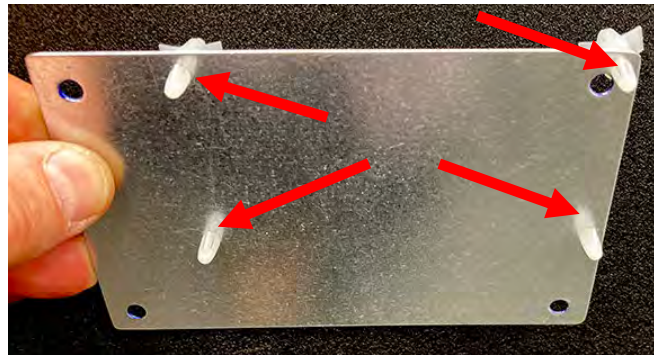


Figure 12

12. Connect the large **PURPLE** wire with Wago snap connector to the left positive terminal on the power supply (see Figure 13).

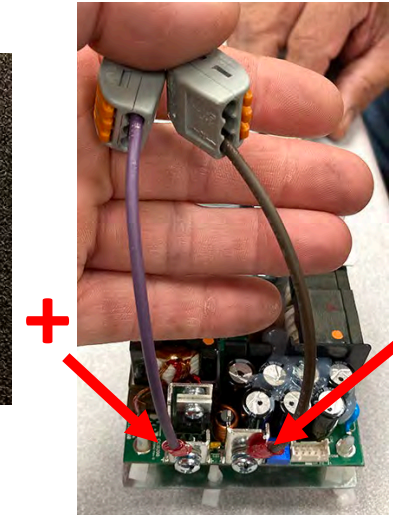


Figure 13

13. Connect the large **BROWN** wire with Wago snap connector to the right negative terminal on the power supply (see Figure 13).

14. Lower and attach the power supply to the plate as shown using the four (4) holes (see Figure 14).

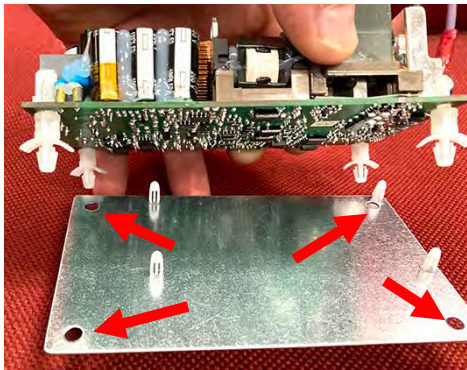


Figure 14

15. Mount the new power supply in the FIB box, using the holes from the power supply removed in step 7 (see Figure 15).



Figure 15

16. Using wire cutters, cut the harness approximately one (1) inch from the end of the connector removed in step 6 (see Figure 16). Discard the connector.

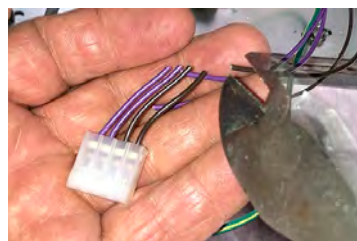


Figure 16

17. Using wire strippers, strip both the purple and brown wires cut in the previous step (see Figures 17 and 18).



Figure 17



Figure 18

18. Insert both **PURPLE** wires from the previous step into the Wago snap connector connected to the positive terminal (+) of the power supply (see Figure 19) by lifting on the orange tabs to unlock the connectors. Once the wires are inserted, close the orange lever to lock the wires into the connectors. Tug gently on the wires to ensure the wires are secured into the connector.
19. Insert both **BROWN** wires from the step 17 into the Wago snap connector connected to the negative terminal (-) of the power supply (see Figure 20) by lifting on the orange tabs to unlock the connector. Once the wires are inserted, close the orange lever to lock the wires into the connector. Tug gently on the wires to ensure the wires are secured into the connector.
20. Connect the ground wire to the ground connector of the power supply (see Figure 21).
21. Connect the power harness with the black and white wire to the power supply (see Figure 22).
22. Reconnect fuse removed in step 3 (see Figure 23).
23. Ensure the FIB board powers up and LEDs are illuminated.
24. Reattach the FIB board cover (see Figure 24).
25. Return the JIB/BIB to its position (see Figure 25).



Figure 19



Figure 20

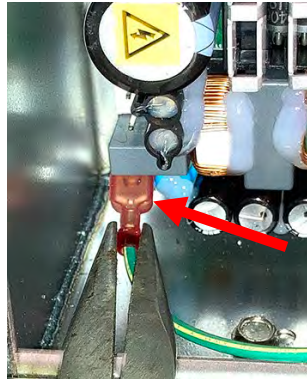


Figure 21

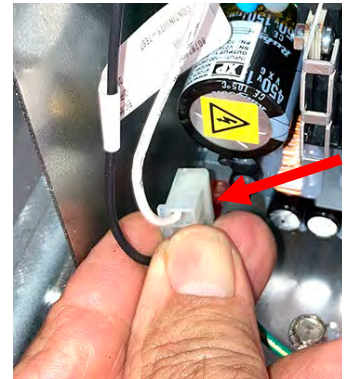


Figure 22



Figure 23

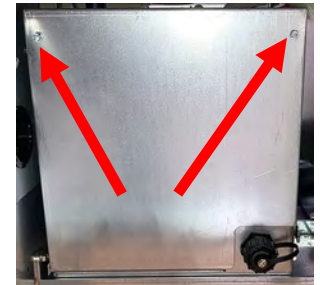


Figure 24



Figure 25